



How to Measure

Three Possible Methods

1. Marked-Up Photos
2. Drawings
3. CAD Files

We need accurate measurements to properly quote and fit your mural. Please measure to within 1/4" using one of the following three methods.

1. Marked-Up Photos

Draw directly on your photos.

Make sure to label walls clockwise as you move around the room (i. e. keep turning to your right).

See our attached **"Measurement Checklist"** for what to include.

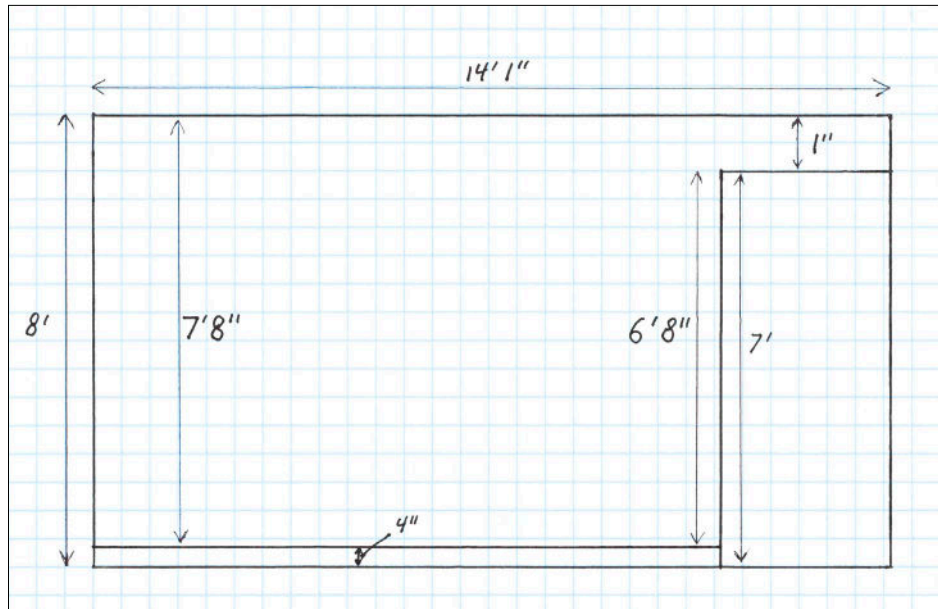


this photo (*above*) ↑ becomes this mural (*right*) →



2. Drawings

- Make sure to label walls clockwise as you move around the room (i. e. keep turning to your right).
- Use graph paper to keep lines straight.
- To get the proportions right, let each square represent a set amount (6" works well for regular sized graph paper).
- See attached **"Measurement Checklist"** for what to include.



this (above) ↑ becomes this (below) ↓



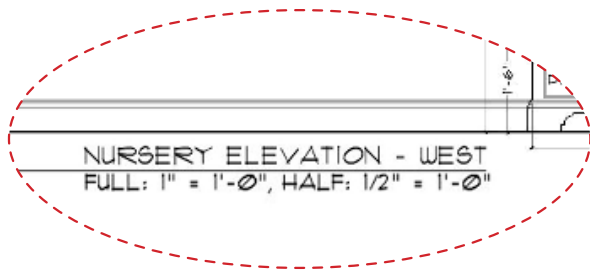


3. CAD Files

Use caution with scaled drawings:

Scale markings can become distorted when you convert an original CAD file to .pdf or .jpg.

The symbol below does not always mean the drawing is actually in scale.

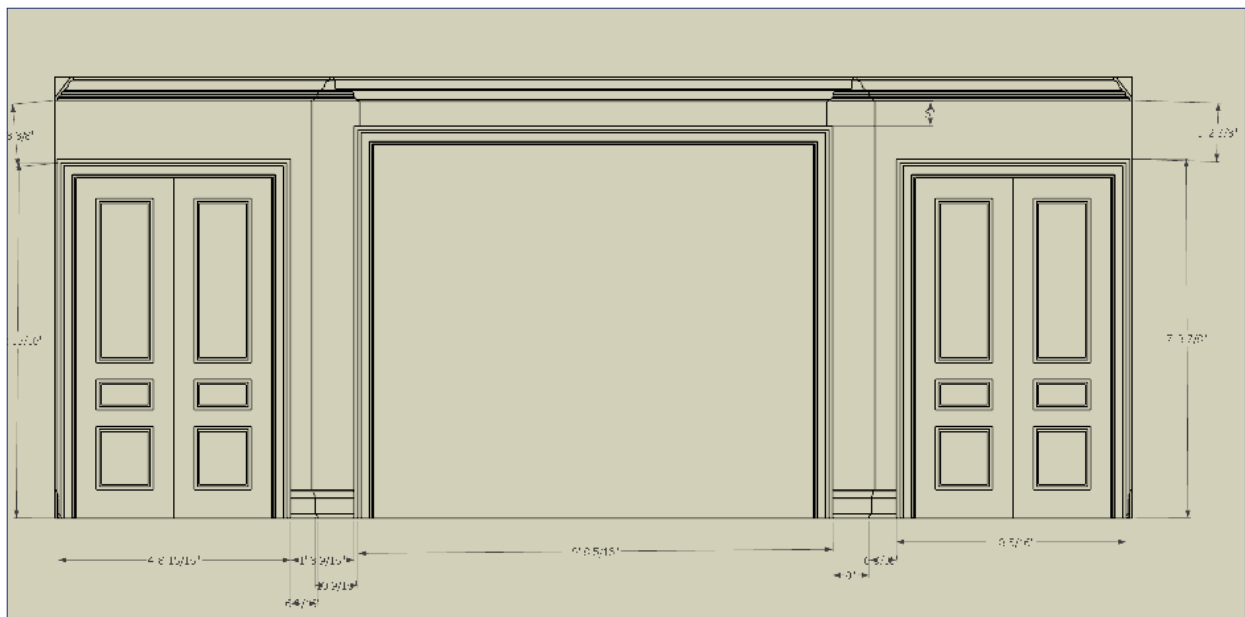


Please send us:

A CAD file in its original format (.dwg, .skp), thus keeping the correct scale.

or

A PDF with written measurements (see attached **“Measurement Checklist”** for what to include).



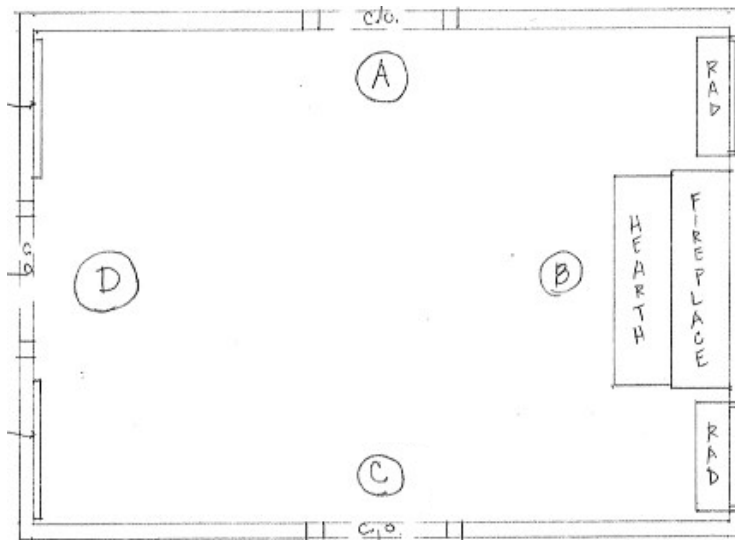


How to Measure: Checklist

We need accurate measurements to quote and fit your mural. Please measure to within **1/4"**, as small mistakes on each wall can add up to big errors around the room.

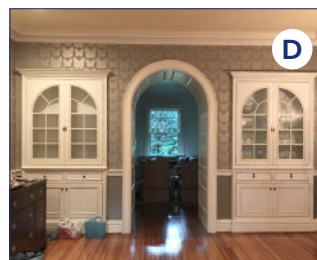
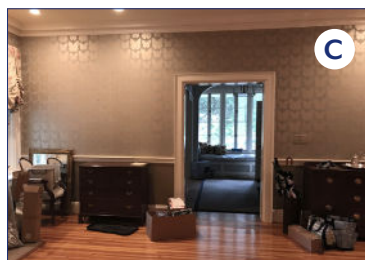
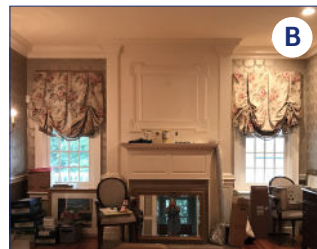
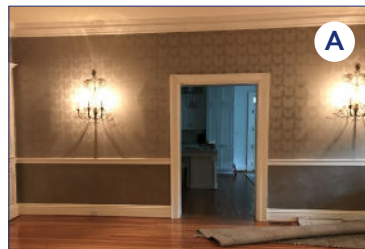
We need:

- A floor plan (room seen from above) with walls labeled A, B, C, D, etc. moving **clockwise** around the room. This can be a quick sketch.



and/or

- Photos of each wall labeled A, B, C, D, etc. moving **clockwise** and matching floor plan, if provided.

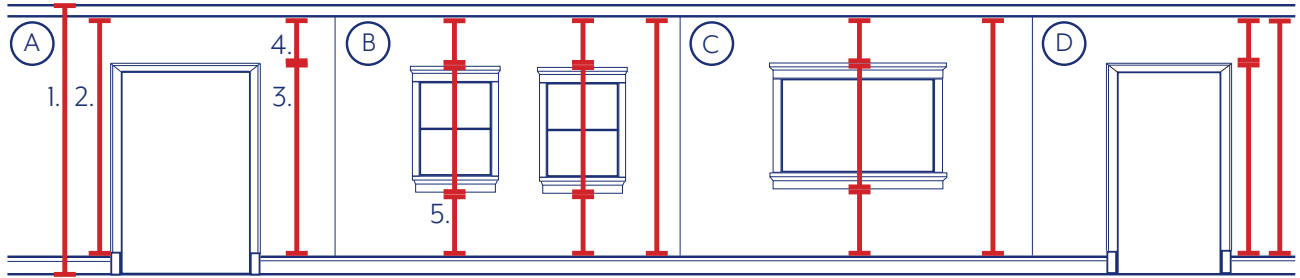




How to Measure: Checklist *(continued)*

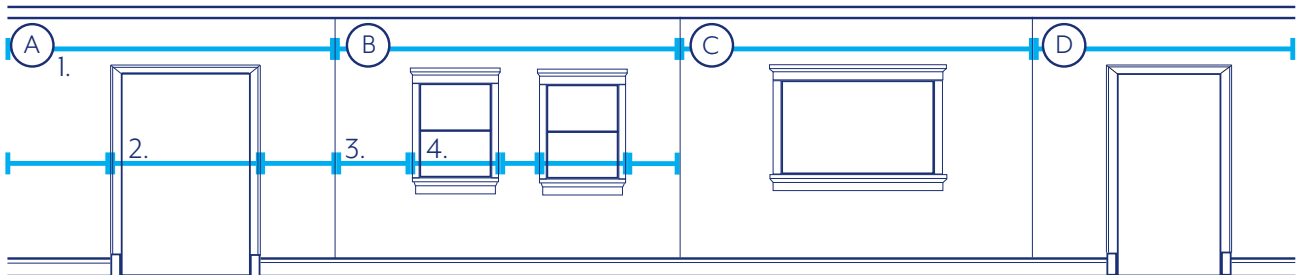
The following **heights** for each wall:

- 1. Total room height from floor to ceiling **including moldings.**
- 2. Wall height **without crown or base moldings.**
- 3. Height of each door and window, **including trim molding.**
- 4. Height of wall above each doors and windows (**just wall, no trim**).
- 5. Height of wall beneath windows (**just wall, no trim**).



The following **widths** for each wall:

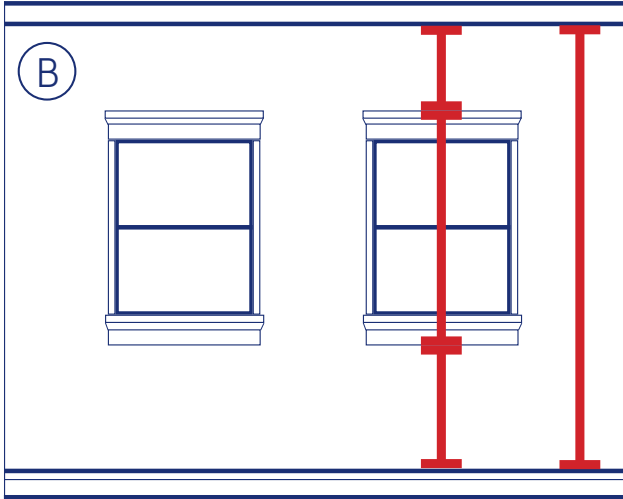
- 1. Total width of each wall from corner to corner.
- 2. Width of each door and window, **including trim molding.**
- 3. Position of doors and windows: distance from corners (**just wall, no trim**).
- 4. Position of doors and windows: distance between them (**just wall, no trim**).



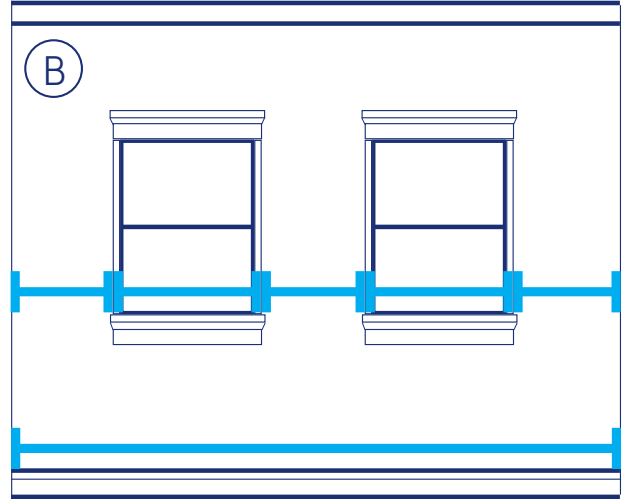


Please Double-check

Do the segments add up to the overall wall **height**?



Do the segments add up to the overall wall **width**?



Common Questions About Measurements

Do you add extra material?

We do add some extra material to aid your paperhanger during installation, however we still need careful measurements for proper layout.

What if I don't have final measurements?

We can quote from rough measurements, but we won't be able to start production without accurate measurements.

Can you give me a ballpark price before I measure?

Sure. Just tell us overall room height, width, and length plus number of small doors/big doors, and small windows/big windows.

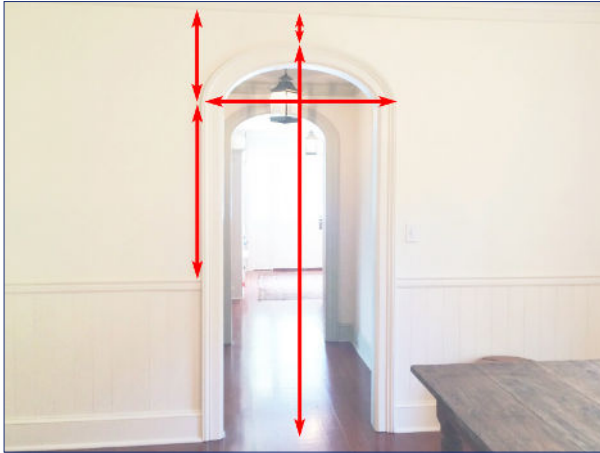
Can my paperhanger tell you how many rolls or panels I need, instead of measuring?

Our tailored murals are custom scaled and adjusted to perfectly fit each clients room. That's why they look as though they were handpainted on site. There are no set rolls or panels from which to order, since no one else's mural will be exactly like yours.



Special Cases

These red arrows indicate which measurements we need for these architectural features.



Arches

Please tell us:

- apex of arch to top of baseboard.
- shoulder of arch to baseboard. (i.e. the straight sides of the arch, before it curves to the top)
- distance from shoulder to crown molding (just wall, no crown).



Bumpouts and Niches

Please tell us:

- depth of side walls.
- floor plan that explains in and outs (anything we might miss on a flat, straight-on wall elevation).



Mantels and Counters

Please tell us:

- width of the widest part.
- width of the narrowest part.
- measurement from room corner to narrowest part of mantel/counter.